



PRG International
Electricals Private Limited



PRG International
Electricals Private Limited

Address : A-25, Site IV, Sahibabad Industrial Area, Ghaziabad - 201010
Contact: +91- (120) 2981074/75 | www.prginternational.com

www.prginternational.com

TABLE OF CONTENTS

01	PRG at a Glance
02	Honour Certification
03	Wide range of product
04	Manufacturing Infrastructure
05	Quality Control
06	Research & Development
07	Key Clients & Green Factory



PRG International Electricals Pvt. Ltd. At a Glance

We're one of the Best
in Electrical Stamping &
Rotor-Die Casting

40⁺ Years of Experience

Company Founder



Lt. Mr. Prem Chand Goyal

My belief has always been simple: build with integrity, work with sincerity, and success will follow. Our foundation was created with these principles in mind.

Managing Director



Mr. Rajeev Goyal

Our identity is shaped not just by our products, but by our commitment to improving every single day. We continue to grow with the values that have guided us from the very beginning.

We have Stable Supply Ability and
BEST QUALITY
to Complete Your Motor.



PRG International Electricals Pvt. Ltd., is a leading professional company manufacturing Electrical Stampings, Laminations, Wound Stators, Die-cast Rotors, Fan Covers, Components for Alternators, Motors (HT & LT) and Home Appliances. The company was set up in 1982 and has been supplying high-precision material to a large number of esteemed clients to their entire satisfaction. At present, the company manufactures 35,000 Ton of material per annum and the capacity is being increased steadily. PRG is an ISO certified company, established in a prominent Industrial Area in U.P. (India) with all the necessary infrastructure, facilities and manpower exceeding 600 persons.

PRG has
Expertise in
Stamping

ISO TUVNORD
14001 : 2015
9001 : 2015

Ø 1120 mm
Maximum Dia

600+
Professionals
Working Together

35000 T
Ton Per Annum

400000 SQ. FT.
Spacious Manufacturing
& Working Area



Committed to Excellence

Our Mission, Vision & Values



MISSION

We are committed to excellence. Our mission is to deliver precision-engineered products of the highest quality, through innovative manufacturing process and unwavering commitment.



VISION

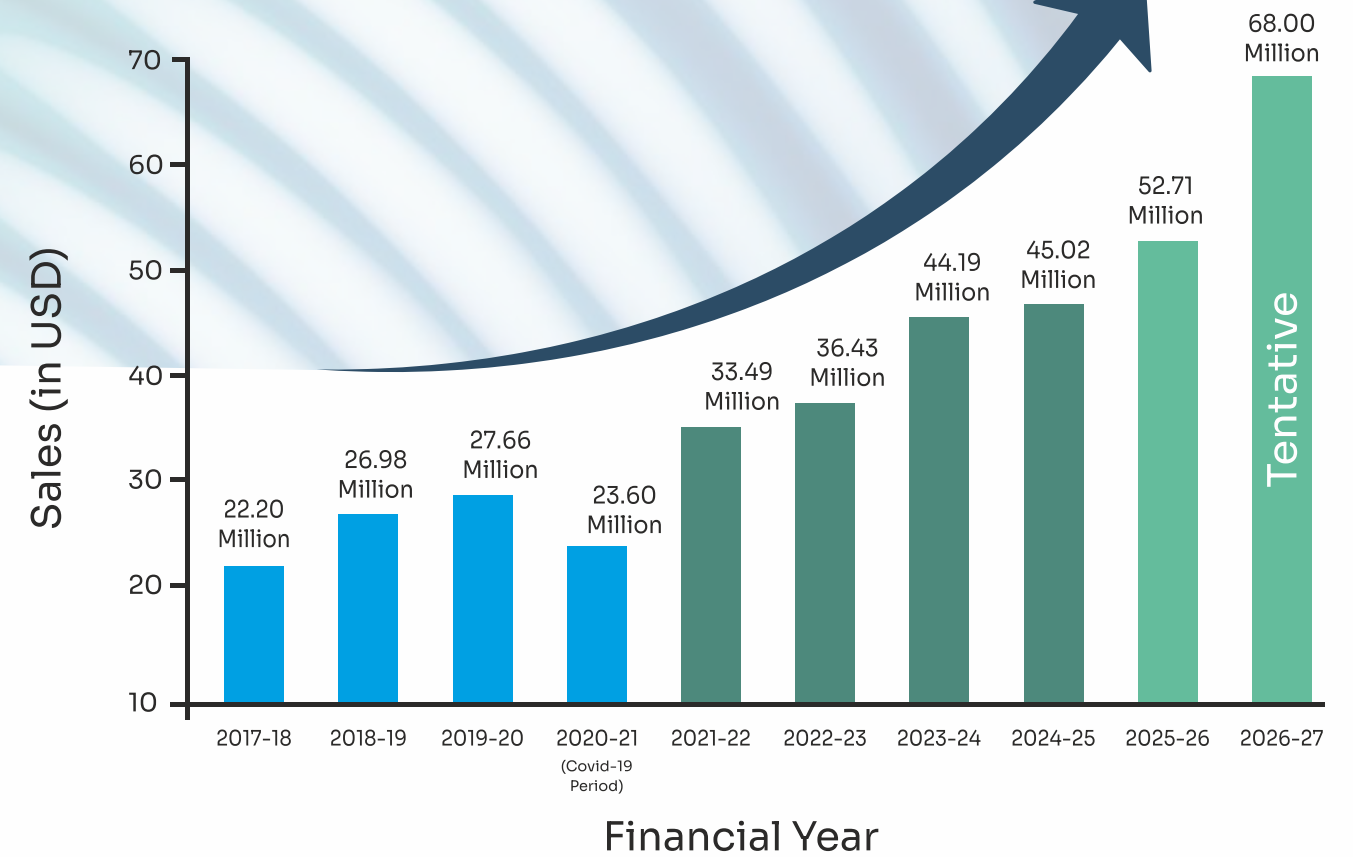
Our Vision is to be the global leader and provide innovative and reliable products to our esteemed customers.



OUR VALUES

We value high standards of business ethics and noble objectives, keeping in mind the interest of all those involved in business.





BUSINESS GROWTH

-  **QUALITY**
-  **COMMITMENT**
-  **DELIVERY**

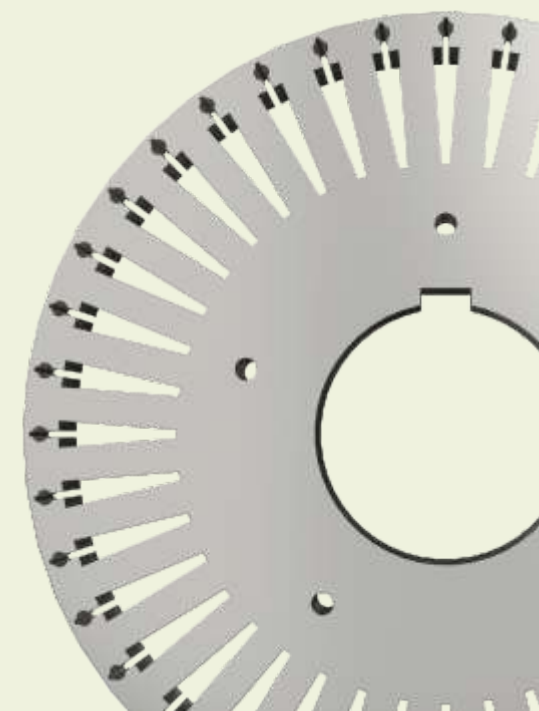
Sales Analysis (YEAR OVER YEAR)

Annual Report

Our Products

**Engineered for Performance.
Trusted for Generations.**

Having served a large number of clients with sheer dedication, exuberant zeal and unwavering commitment, we have earned many coveted honours and laurels. We can claim with pride and elation that we are part and parcel of the progress of our distinguished clients.



HONOUR AND CERTIFICATION

We are ISO 9001:2015 and Which makes us one of Partners in

ISO 14001:2015 Certified, the 'Most Trusted Manufacturing' In India.



ISO 9001:2015 (TUV India)
International standard for Quality Management Systems, ensuring PRG's processes deliver consistent, top-grade products



ISO 45001:2018 – Occupational Health & Safety
Certification proving PRG's strong commitment to workplace safety, employee well-being, and global compliance.



Tata Nexarc Verified Business Certificate

Validation of PRG as 'A verified and credible manufacturing partner' in the Indian market.

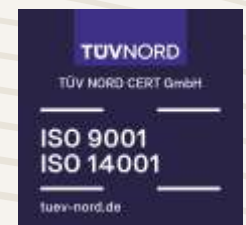


ABB Appreciation Certificate
Recognition from ABB for consistency, quality, reliability, and long-term trusted partnership.



ISO 14001:2015 (TUV India)
Environmental Management certification showcasing PRG's dedication to sustainable and eco-friendly manufacturing practices.

Certified Legacy with Leadership



↗ **Wide Range of Products**

The Stamping Division manufactures a wide range of components including Stators and Rotors for various applications including Ceiling Fans, Table Fans, Electrical Motors (HT & LT), Submersible Pumps, Mono Block Pumps, Washing Machine, Mixers, Industrial Motors, Coolers, Refrigeration Systems and Exhaust Systems.



Manufacturing Infrastructure



**INDIA'S TOP MOST
TRUSTED MANUFACTURER**



350,000 Sq. Ft.
Production Unit



400,000 Sq. Ft.
Total Area



3500 TON
Monthly Production Capacity



600+
Workers

Production Capacity

At present, we manufacture 3000 to 3500 Tons of material every month. Moreover, the demand for and production of the components is on steady increase.

Our company is focused on continuous capacity expansion to support increasing market demand. We consistently invest in modern machinery, skilled manpower and production optimization to increase manufacturing capacity while maintaining the highest standards of quality and efficiency.

Further, we have adequate spare capacity to take up the production at short notice. Besides, we always maintain enough stock of raw material to meet emergency needs of our clients.



PRODUCING
3,000–3,500
tons
of stamping monthly

On-time
DELIVERY
is our promise,
QUALITY
is our habit

We always
Concentrate on **Improvement**
not excellence

Production Efficiency

ISO 9001:2015 and ISO 14001:2015 Certified

TUVNORD

TÜV NORD CERT GmbH

ISO 9001

ISO 14001

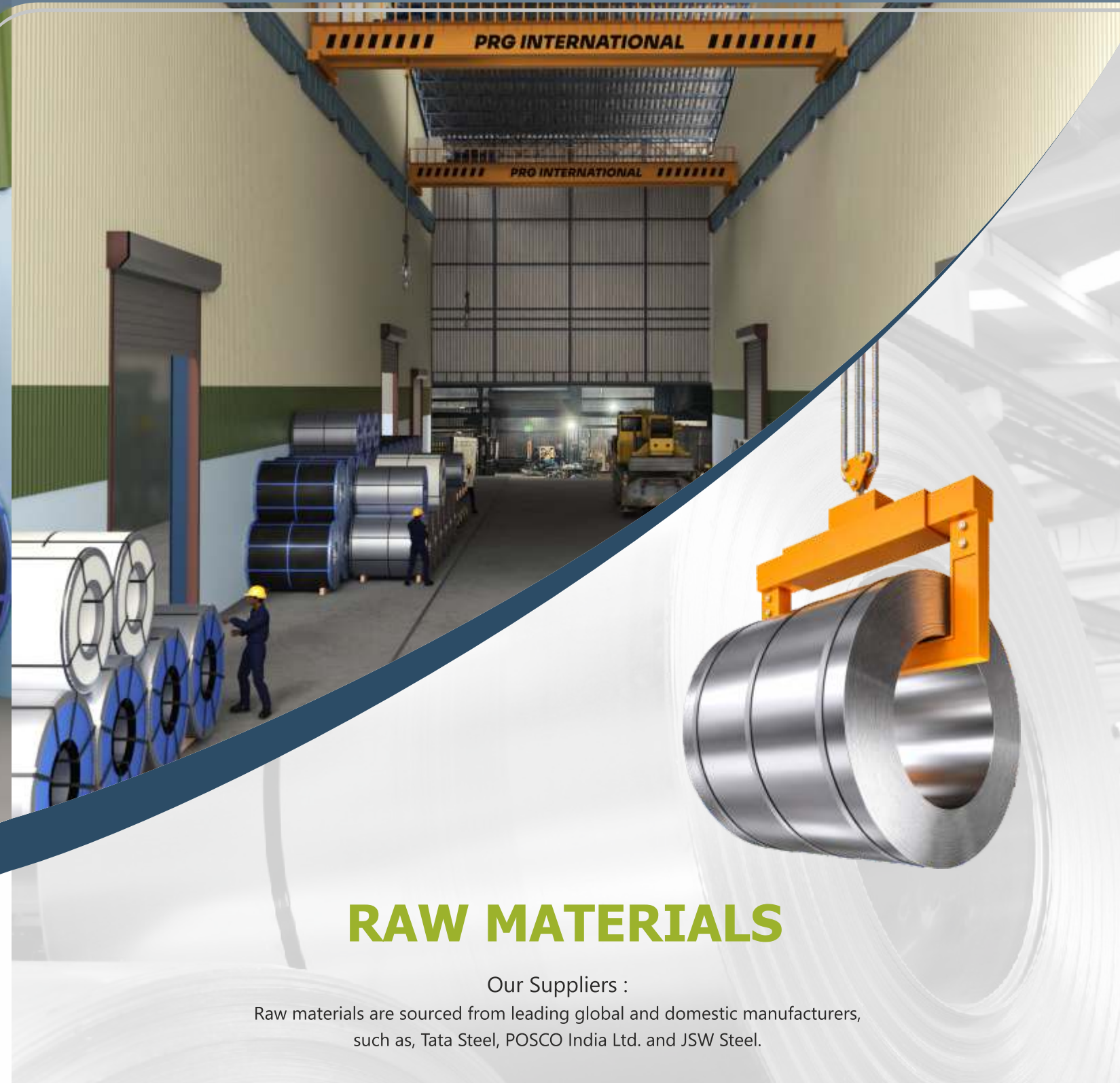
tuev-nord.de



Coil Yard

Efficient Handling and Storage of Raw Materials

Our well-organized Coil Yard, with adequate raw material stocking, efficient material movement and robust planning system, forms the backbone of our high-volume production capability.



RAW MATERIALS

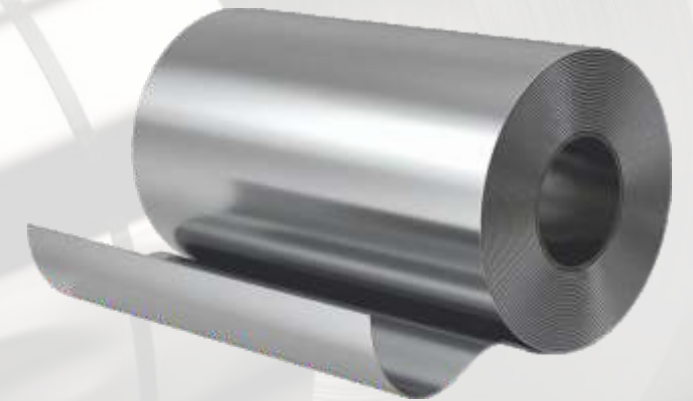
Our Suppliers :
Raw materials are sourced from leading global and domestic manufacturers, such as, Tata Steel, POSCO India Ltd. and JSW Steel.



Slitting Line Department



**Coil Weight:
Up to 15 tons**



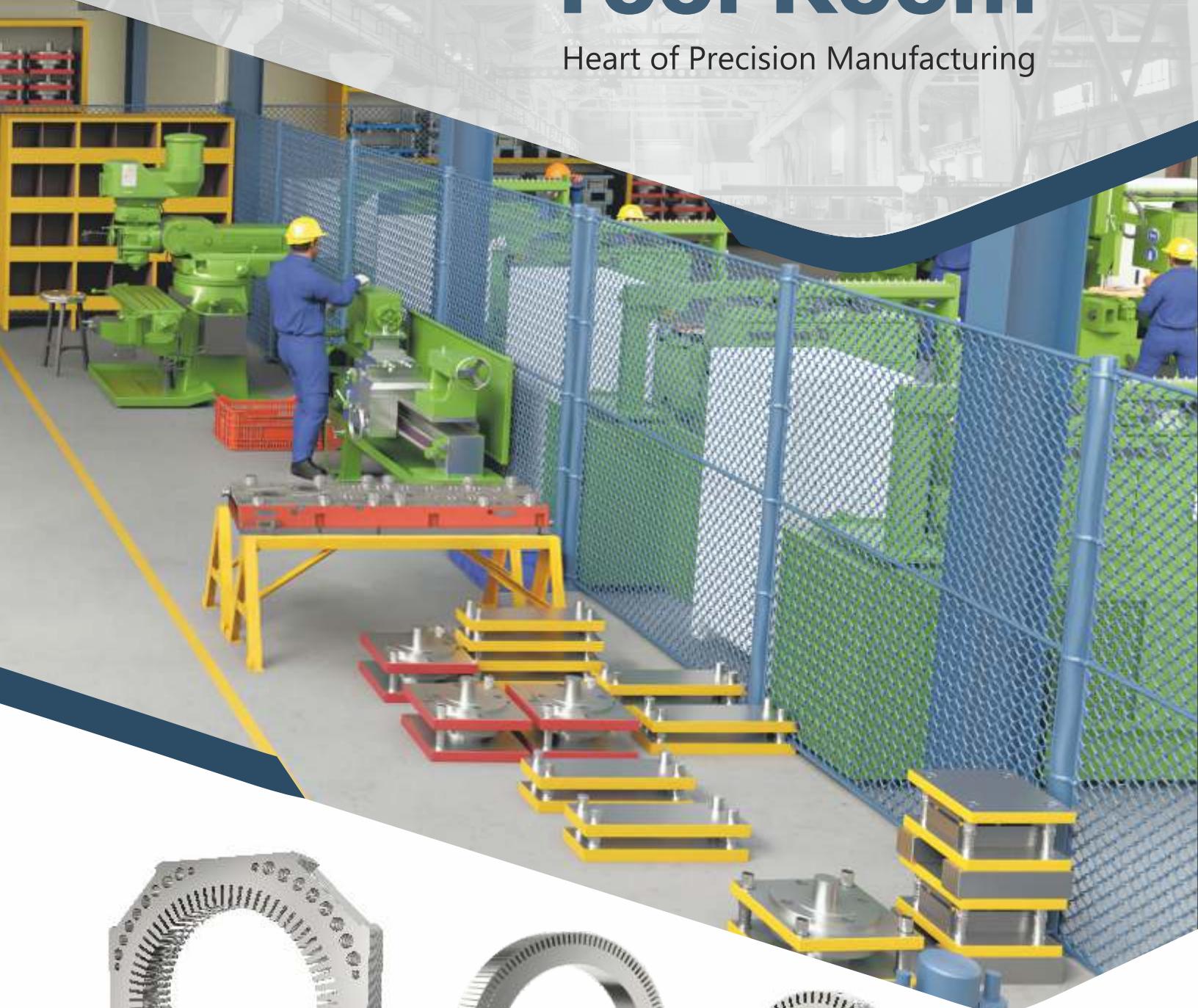
**Coil Width:
Up to 1,300 mm**

Our in-house slitting facility ensures uninterrupted production, with minimum burr & camber.



Tool Room

Heart of Precision Manufacturing



Equipped with Advanced Tool Room Technology

Maintenance & Support

Our Tool Room, where all critical tools, dies and fixtures are designed and developed, is the backbone of our manufacturing excellence. With advanced CNC Machines, EDMs, Grinders, Machining Center and Milling Machine the Tool Room is well-equipped to ensure the production without any hitch.



Notching Department



SCHULER (GERMANY)

7 Units

Other High Speed Machines.

10 Units

Maximum Dia

Ø 1120 mm

The most
Effective
way to do it
is to **Do It**

We are Experienced

We believe in team work as we realize that to achieve any type of goal we need very strong team and our team is co-operative & highly experienced.

We are Punctual

Our process is implemented in such a way that everything gets connected to achieve the target & complete the work on-time.

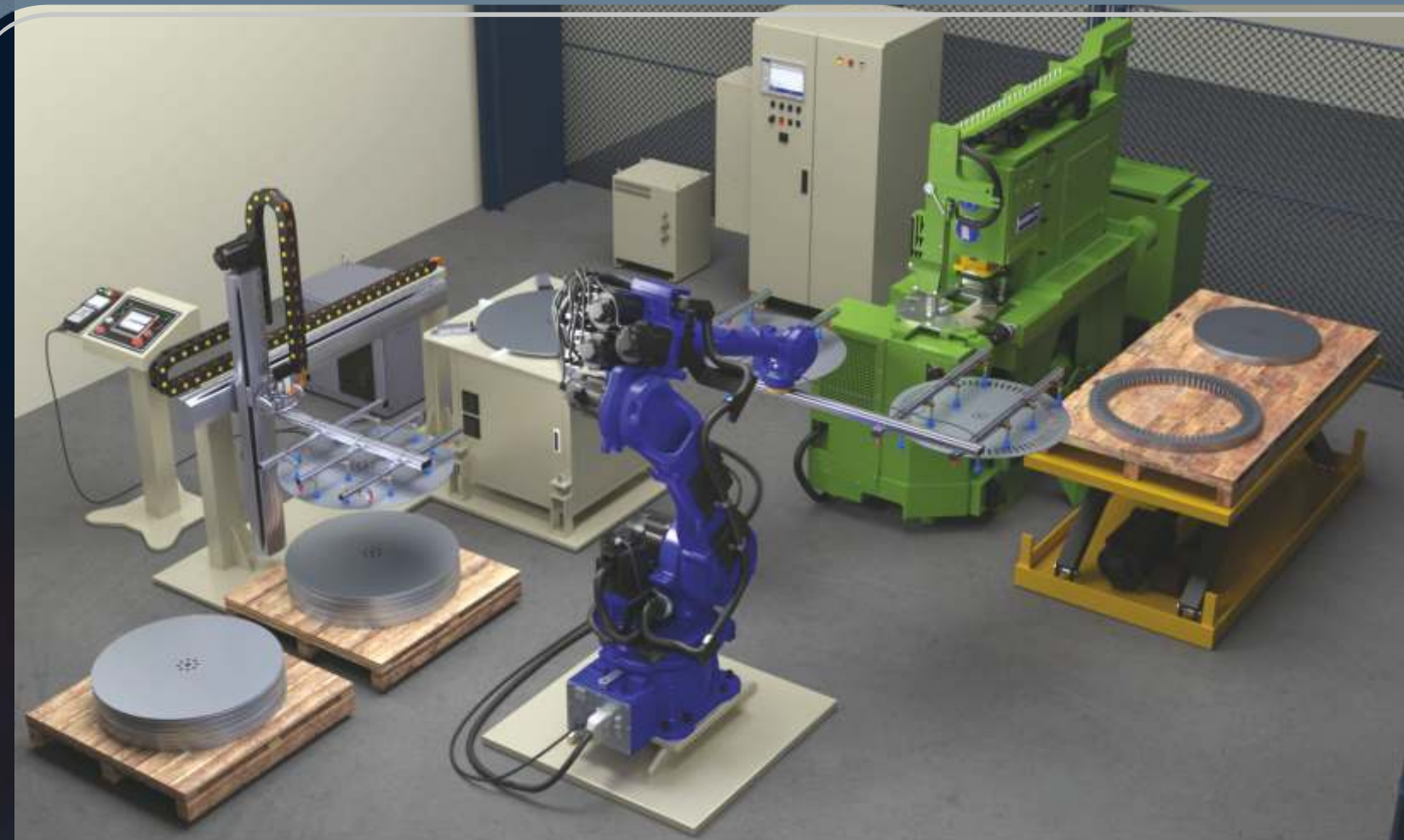
Precision in Every Lamination

We employ advanced high-speed notching machines designed for the precision punching of electrical steel laminations used in stators and rotors. Our notching line is equipped with SCHULER (Germany) machines along with other high-performance systems that ensure unmatched speed, consistency, and accuracy throughout the production process.

Our facility is capable of producing both segmental and circular laminations, accommodating a wide range of motor frame sizes and pole configurations.



From **LAMINATIONS**
to **DIE CASTINGS**
We Shape Your Power.



Automated Notching Systems

Opted by PRG

Our facility houses 'Robotic Notching Systems' with the capacity to produce large volumes of stamping & laminations with error-free consistency, quality, and efficiency, fully supporting high-volume operations.



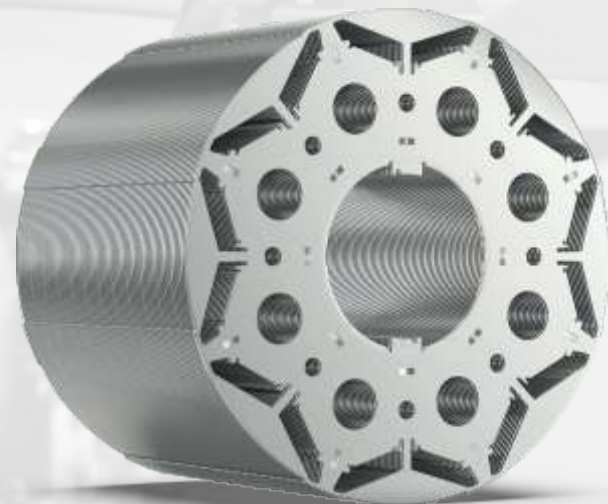
> **Maximum Diameter**
Up to : Ø 1120 mm





High Speed Power Pressing Department

Precision, Performance & Productivity

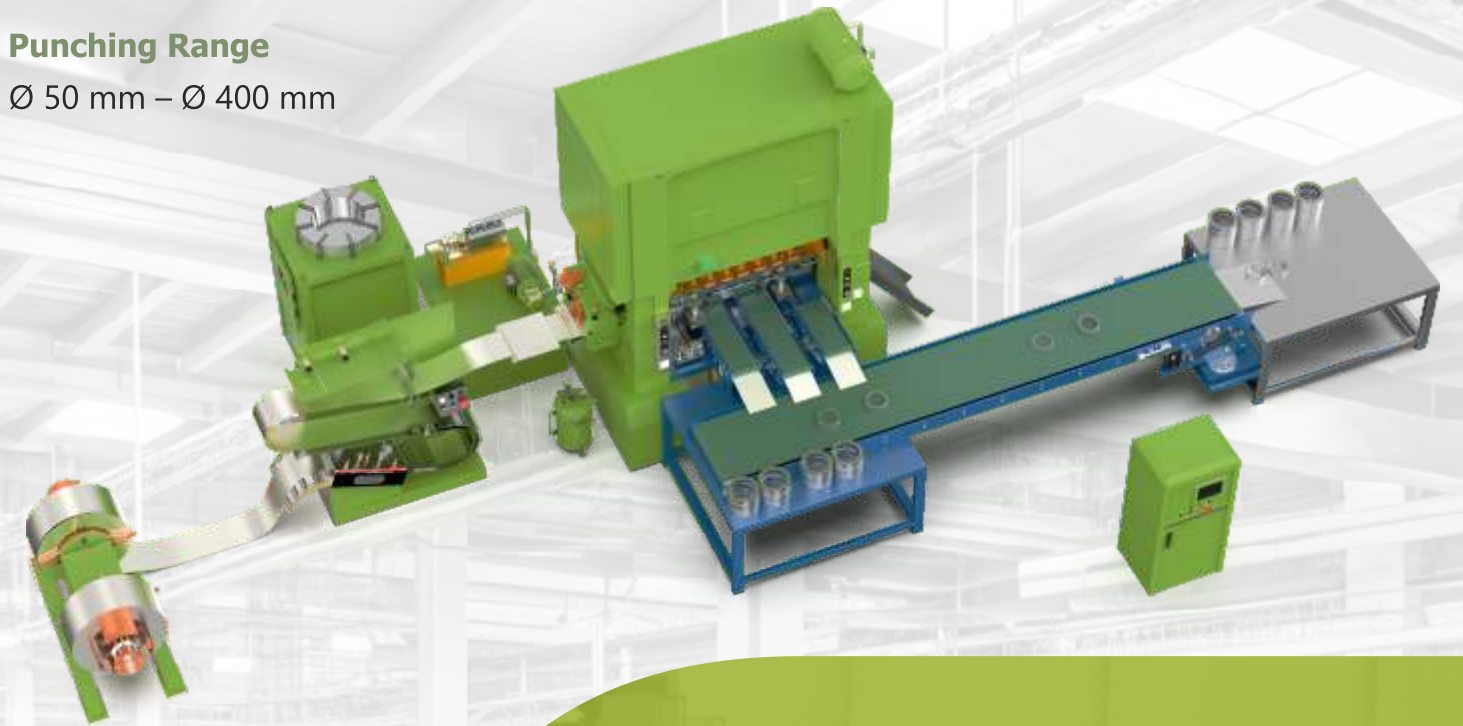


Press Machines Capacities

80 Ton | 125 Ton | 200 Ton | 300 Ton | 350 Ton

Punching Range

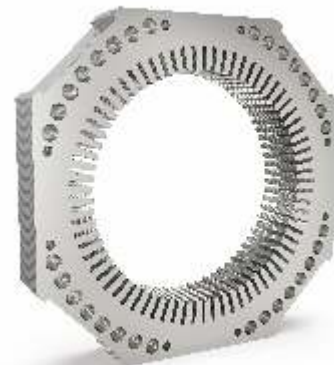
Ø 50 mm – Ø 400 mm



We efficiently cater to lamination requirements of its our clients with the help of a number of high-speed presses varying from 80 ton to 350 ton. Our fully automatic stamping lines are equipped with auto-skewing & auto stacking controllers, high tech de-coilers, S-type material straightener, geared & servo feeders for running ultra-precise carbide progressive tools.



BLANKING DEPARTMENT



MACHINES CAPACITY:

- 400 Ton
- 250 Ton
- 150 Ton
- 125 Ton

Precision Blanking for Perfect Beginnings

Our Blanking Department are designed to deliver high-speed, high-precision sheet blanking — forming the foundation of accurate and efficient stamping operations. These machines ensure uniform blanks with precise dimensions, smooth edges, and minimal material wastage, setting the stage for flawless downstream processes.

Equipped with automatic coil feeding systems, straighteners and decoilers, our blanking lines operate with complete synchronization and control. Each line is built to handle a variety of materials and thicknesses, offering flexibility and reliability for large-scale production.



Compounding Punching Department

Precision & Productivity in One Stroke



Our Compound Punching Machines deliver high-precision stamping of electrical steel laminations through a single-step punching process that combines multiple operations into one. This advanced system ensures exceptional dimensional accuracy, reduced cycle time, and high production efficiency—making it ideal for manufacturing.

The compound punching process simultaneously performs blanking operations, maintaining perfect alignment and shape consistency across large production volumes.

Our facility integrates both manual and automatic compound punching lines, supported by precision tooling design and continuous die maintenance programs to ensure consistent output and extended tool life.

MACHINES CAPACITY:

- 400 Ton
- 250 Ton
- 150 Ton
- 125 Ton



Infrastructure & Technology

- High-precision compound punching presses
- In-house designed compound dies and fixtures
- Automated feeding and ejection systems
- Real-time monitoring for press load and alignment accuracy
- Quick die-change system for faster setup and reduced downtime



Rotor Die Casting Department

Precision Casting for
Efficient Motor Performance



MACHINES CAPACITY

120 Ton | 250 Ton | 400 Ton

ROTOR DIAMETER

Ø 50–450 mm

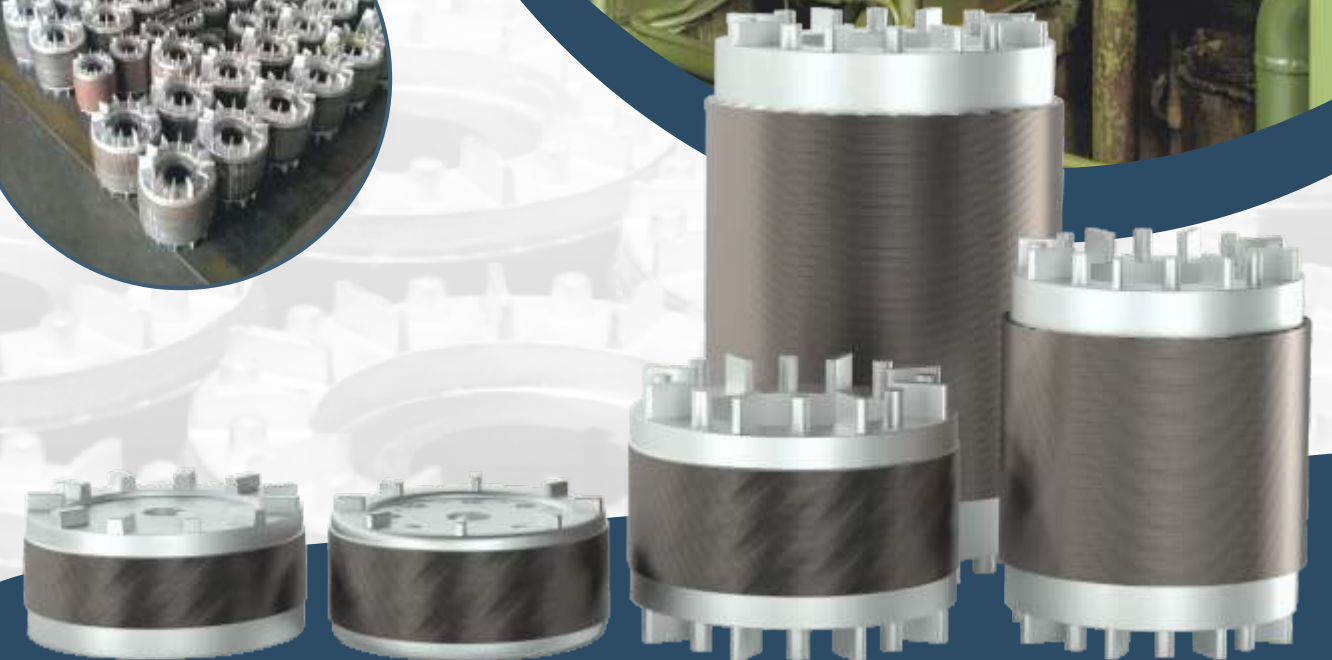
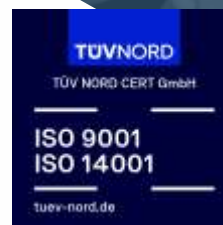
MAX CORE LENGTH

500 mm



**Copper &
Aluminium**

DIE CAST SOLUTIONS



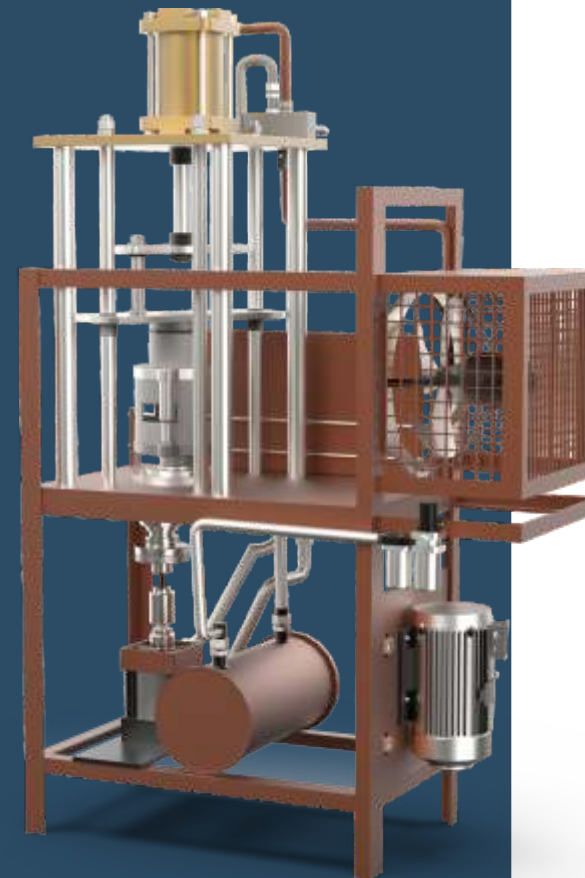
Pressure Die Casting Department

Strength, Precision & Performance in Every Casting



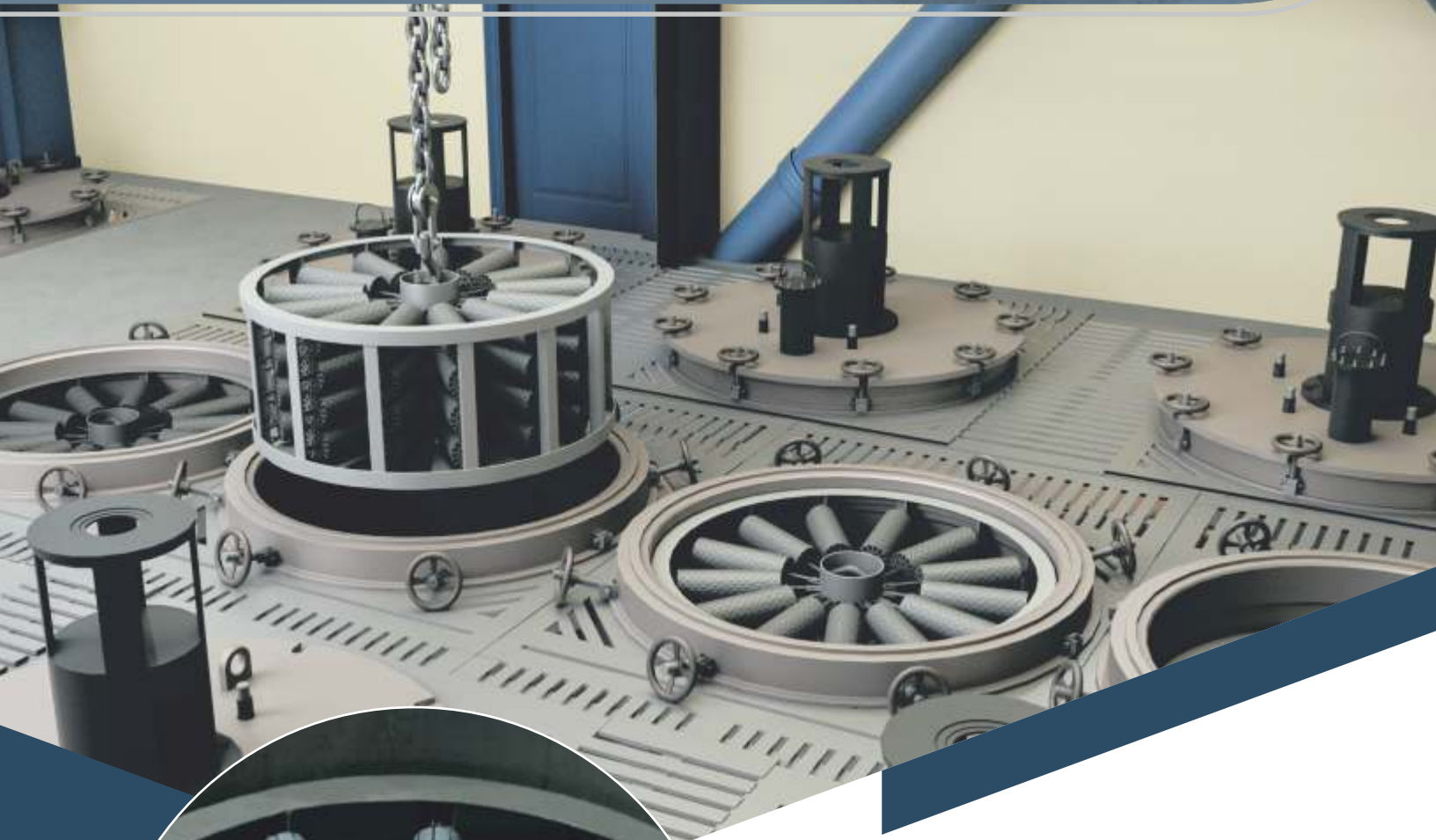
CENTRIC FUGAL DIE CASTING MACHINE

Aluminium die casting is a key process in our manufacturing line, used to produce high-quality components with excellent dimensional accuracy and surface finish.



High-performance die-casting solutions supported by modern **Technology** and skilled **Expertise.**





Annealing Area

Grain Size Increase	 
Hysteresis Loss Decrease	 
Eddy Current Loss Decrease	 
Carbon Percentage Decrease	 



Packaging & Dispatch Area



Ensuring Protection, Presentation & Perfection

Our Packing Department ensures every product is securely prepared for safe handling, storage, and transportation. Using high-grade packing materials, standardized procedures, and rigorous quality checks, we guarantee damage-free delivery and protection throughout the supply chain. Each shipment is systematically labelled, sealed, and verified to meet customer specifications and international packaging standards.

FHP MOTOR INSIDE VIEW

We specialize in designing and manufacturing precision-engineered Ideally Suitable FHP (Fractional Horsepower) motors built for flawless and efficient performance, which are supported by advanced production machinery and a comprehensive range of quality-check equipment.



PRODUCTION

Fully-Automated
Production Line



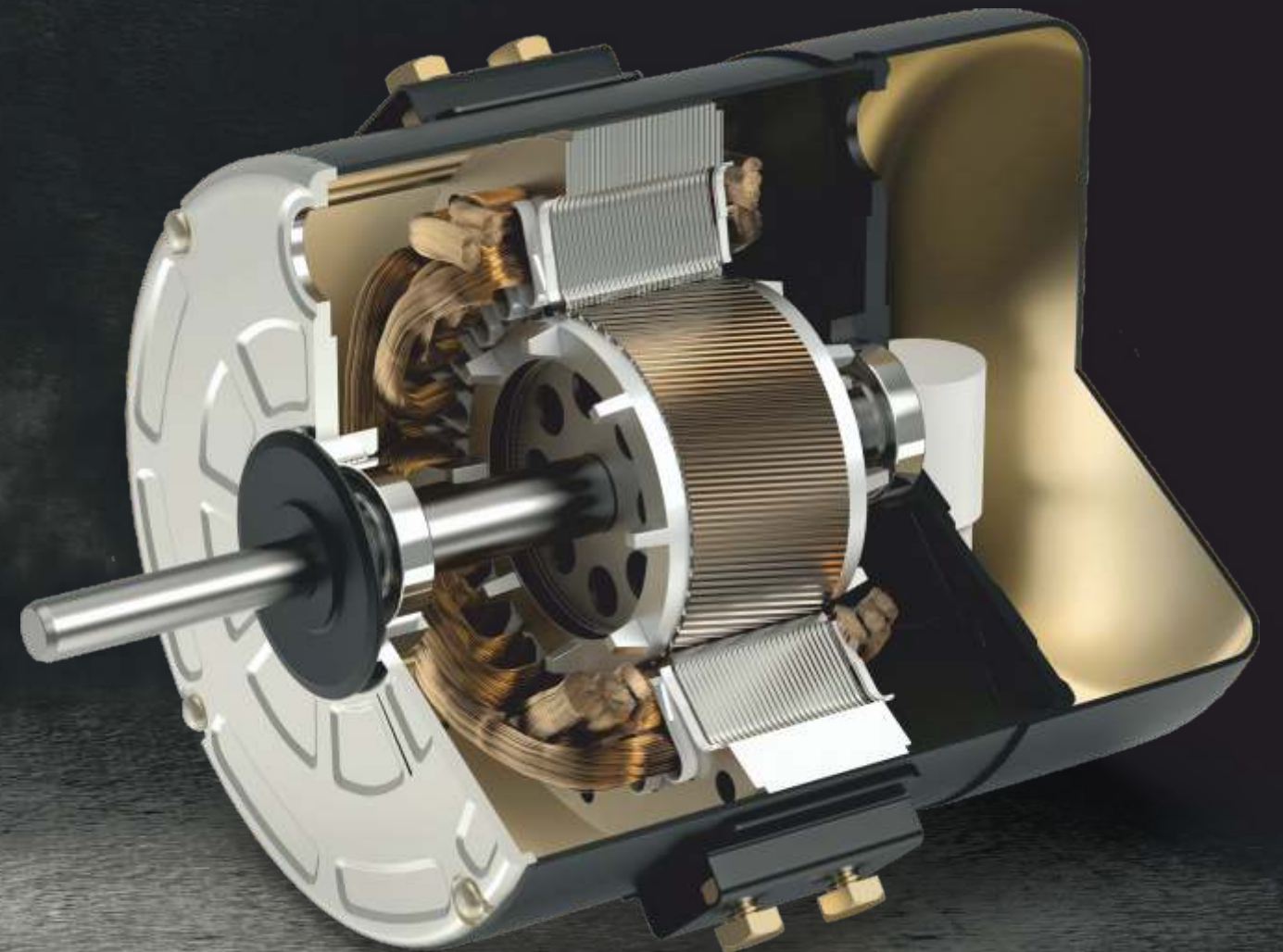
BIS - 996

Marked Motor for
Better Quality Check



SIZES

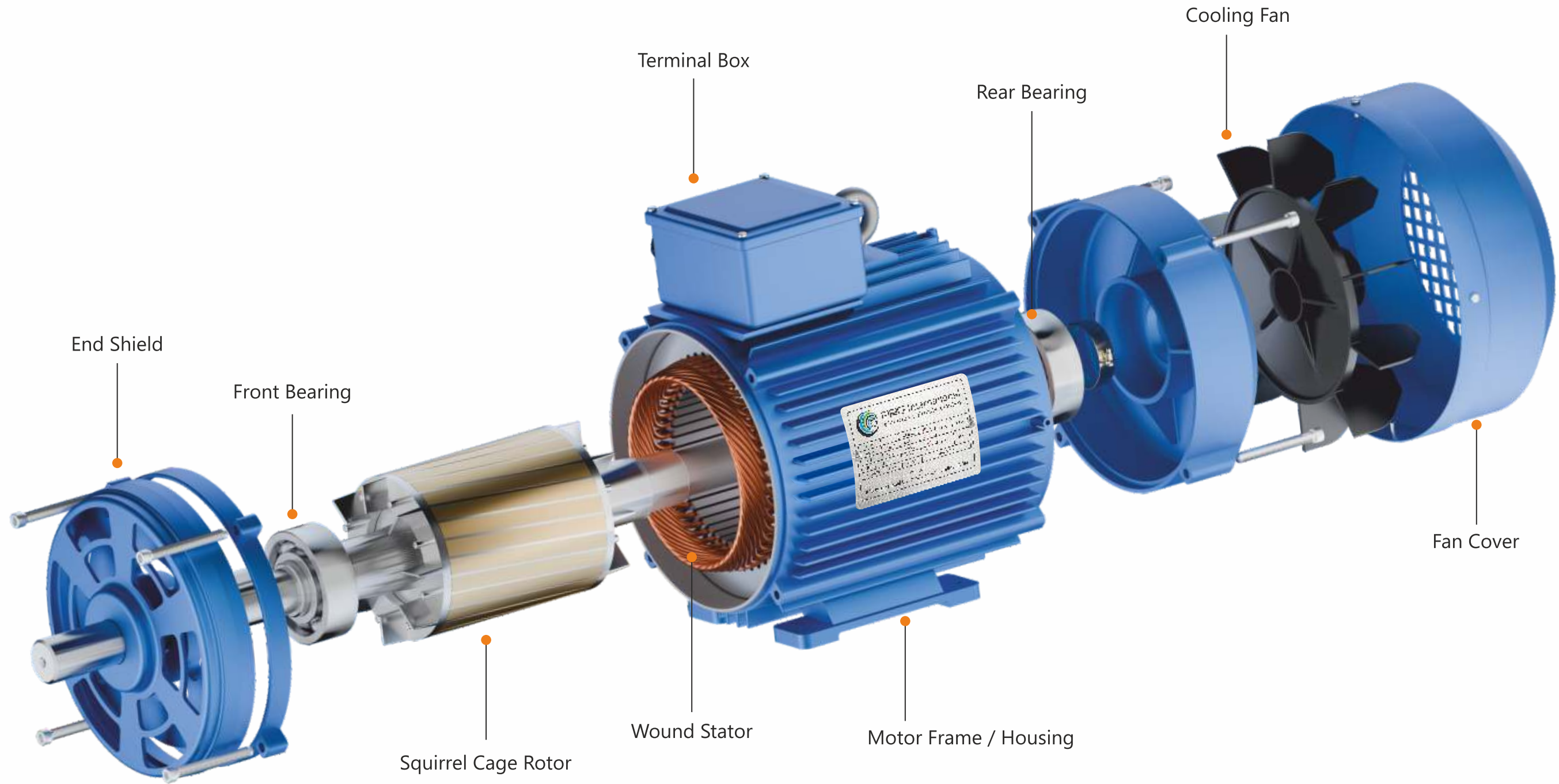
110 OD | 100 OD | 89 OD
E-Frame | H Frame



PRG is a trusted leader in precision manufacturing, delivering products aligned with global quality benchmarks and industry expectations.

COMPONENTS

Standard Design Motors



Quality Assurance



1

Company Level: Quality Control Department

- Supervise the company's quality control system
- Ensure effective operation of the quality control system

2

Department Level: Quality Group

- Execute company quality control system
- Process Management & Supervision

3

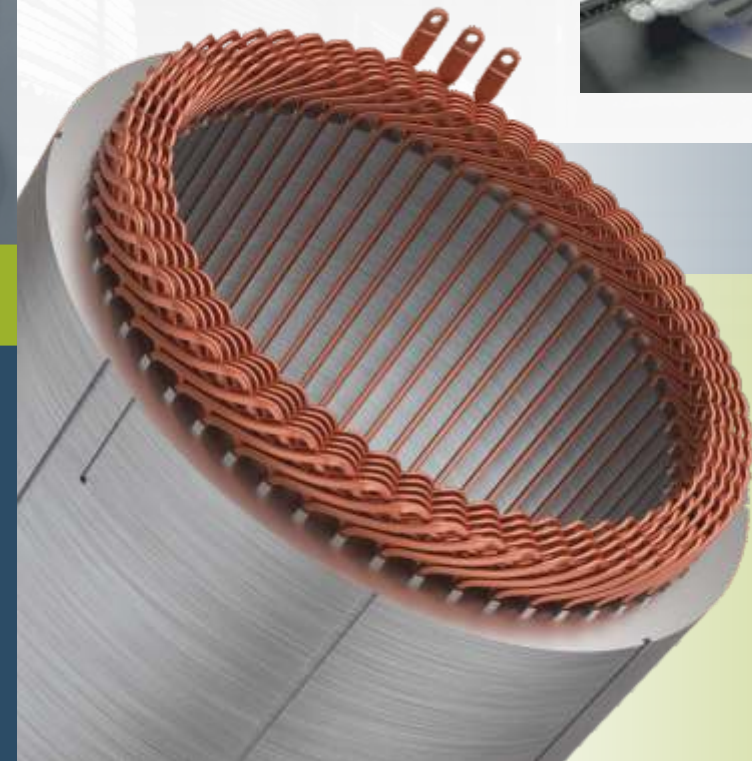
Team Level: Quality Inspector

- Strictly implement SOPs
- Monitor the Production Process



As we win the confidence of our customers by the quality of our products, we always rigidly follow the latest technology and international standards, besides specific requirements of the customers. As we never compromise the quality on any ground, we are the first choice of all those who are particular about quality.

Moreover, R&D is an ongoing process at **PRG** and we manufacture our products in accordance with the latest technological advancements.

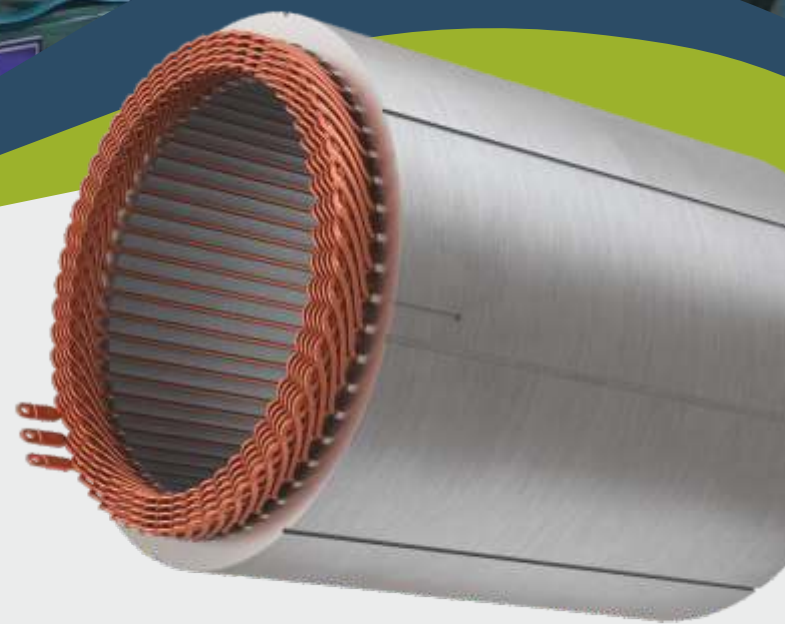


Quality & Delivery

“Quality
means doing it **Right**
when no one
is **looking”**



- Technological Advancement
- Innovative Solutions
- Advanced Engineering
- Research Excellence
- Future Development
- Engineering Innovation
- Product Evolution



Prepared Today
for Tomorrow's
Breakthroughs

Ready for New
IDEAS
Ready for New
Possibilities

Research & Development

Our R&D team is always prepared to explore fresh ideas, embrace new technologies, and transform possibilities into practical, high-value solutions. We stay ahead of industry needs by continuously experimenting, improving, and developing innovations that push boundaries and create meaningful progress.

R & D SEGMENT
ISO 9001:2015 and ISO 14001:2015 Certified



Design & Engineering

- CNC Laser Cutting
- Fixture design and simulation
- 3D CNC programming with Mastercam & CADEM

Digital Development

- 3D scanning for precise design
- 2D/3D design using AutoCAD & Solid Works

Innovation & Process Development

- Glue bonding technology advancement
- Fully Automated Robotic Process System



Green Factory

Our facility operates as a fully sustainable green factory with all the necessary backgrounds. Having set up a 1MW solar plant the necessary infrastructure and facilities are available with us to maintain eco-friendly raw materials and low emissions manufacturing process that apart we maintain efficient waste management, rain water harvesting and green landscaping across the facility. Every operation is done in conformity with global environmental standard. To be precise we always focus on reducing ecological footprint while enhancing operational efficiency.



“Driven by a commitment to protect and preserve our ENVIRONMENT.”

At PRG, we are committed to building a cleaner and more sustainable future through environmentally responsible manufacturing. Our Green Factory initiatives focus on reducing our ecological footprint while enhancing operational efficiency.

Our Clients.

TRUSTED PARTNERS



ISO-Certified Manufacturing
Quality you can rely on.



Precision Electrical Stamping
Engineered for Excellence.



Trusted by Leading OEMs
Strong Partnerships. Lasting Impact.